

Name	Security Level
BELLSING™ Receiver In The Canal Assembly	Open
Version	A Total of 9 Pages
REV A	

BCS320H1000X

Product Specification

Prepared by:	<u>Lamb Yang</u>	Date:	<u>2017-04-10</u>
Auditor:	<u>Lamb Yang</u>	Date:	<u>2017-04-10</u>
Approver:	<u>Kimi Ma</u>	Date:	<u>2017-04-10</u>



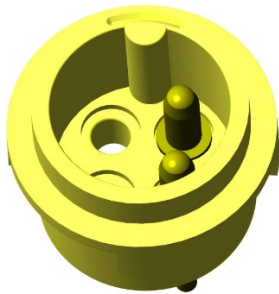
Dongguan Bellsing Precision Component. Co., Ltd.

Product Specification

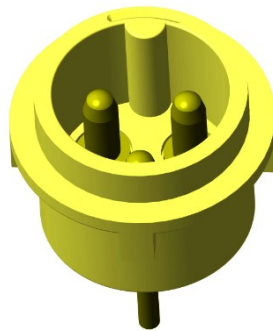
Product number :BCS320H10002 (2Pin Socket Assembly, Beige)

BCS320H10003 (3Pin Socket Assembly, Beige)

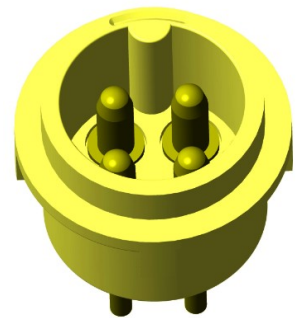
BCS320H10004 (4Pin Socket Assembly, Beige)



BCS320H10002



BCS320H10003



BCS320H10004

Contents

1. Description and application.....	4
1.1 Description.....	4
1.2 Application.....	4
2. Mechanical Layout Dimensions.....	5
2.1 Main dimension.....	5
2.2 Material List.....	7
3. Specification.....	8
4. Change History.....	9

1. Description and Application

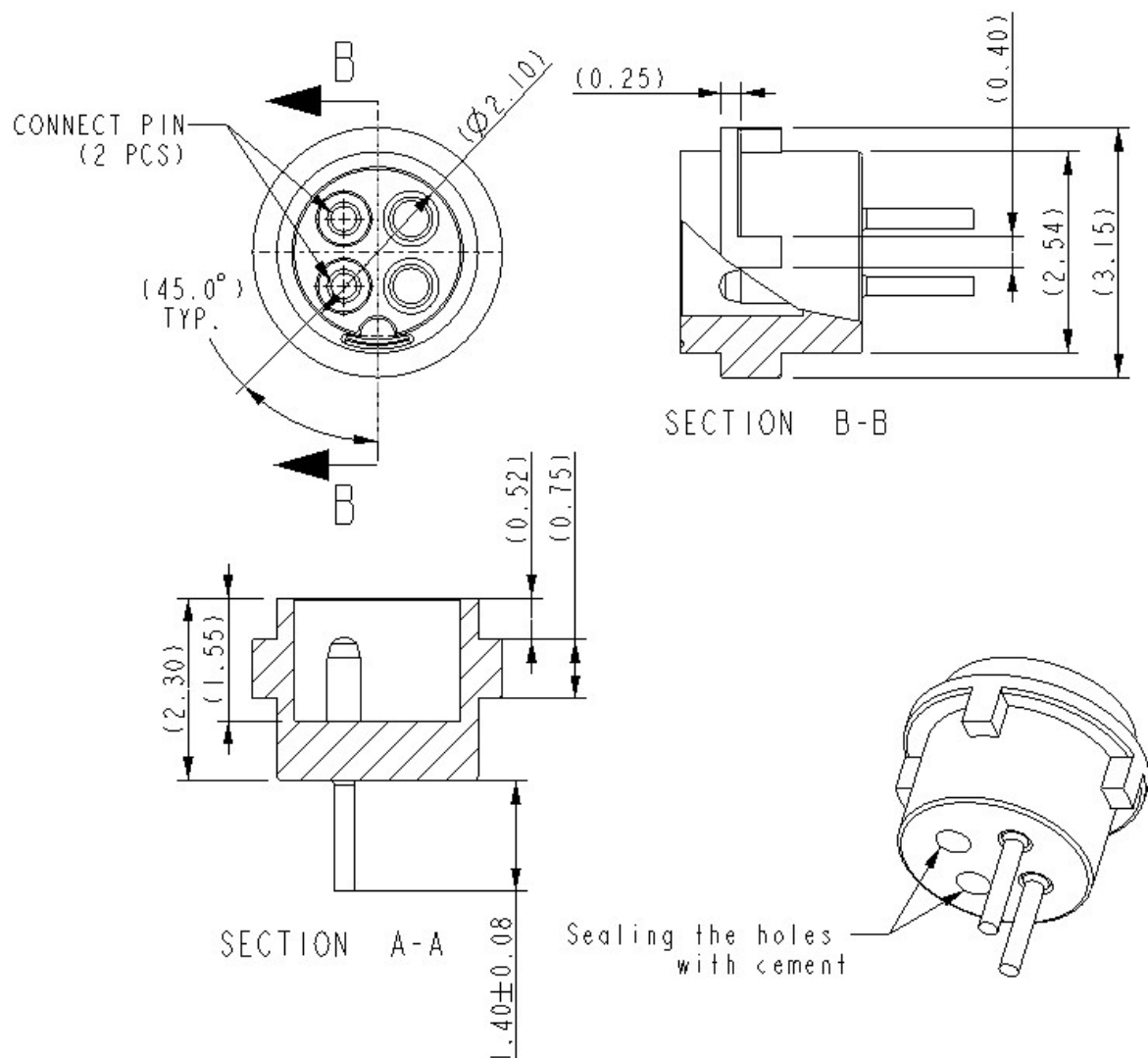
1.1 Description: Connector socket assembly for Hearing aid BTE side

1.2 Application: Consumer electronics and medical equipment

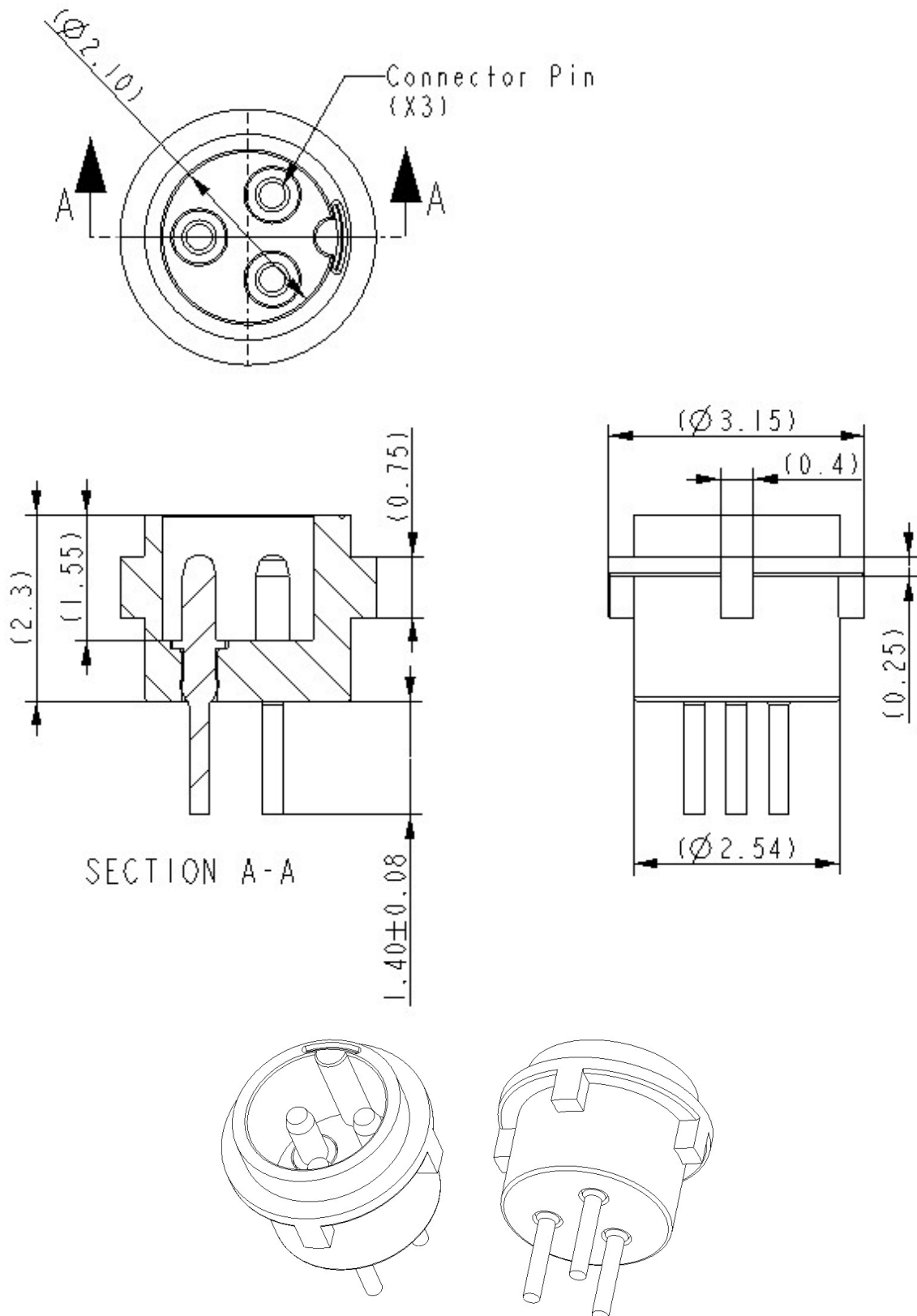
2. Mechanical Layout and Dimensions

2.1 Main Dimension

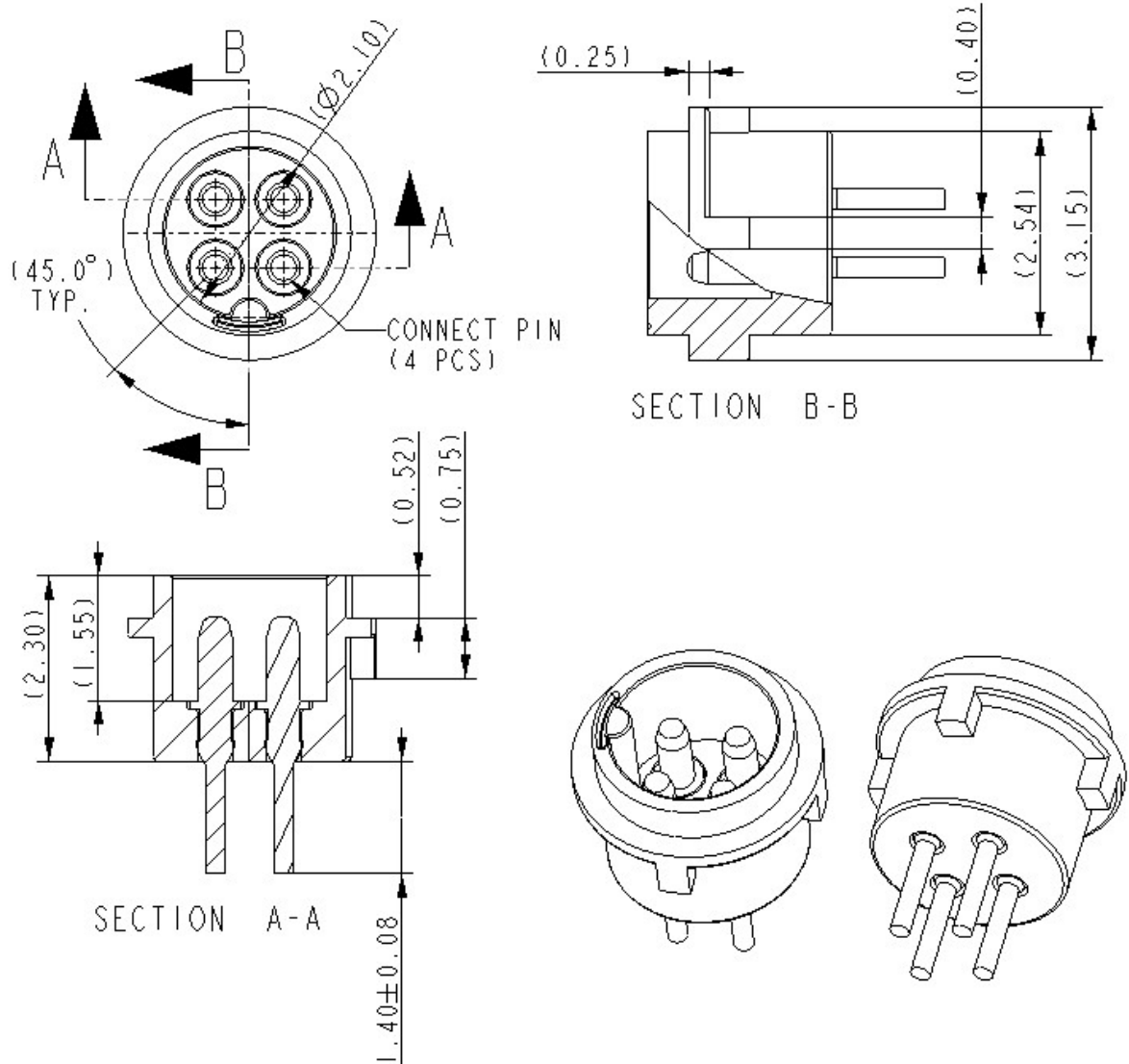
BCS320H10002



BCS320H10003

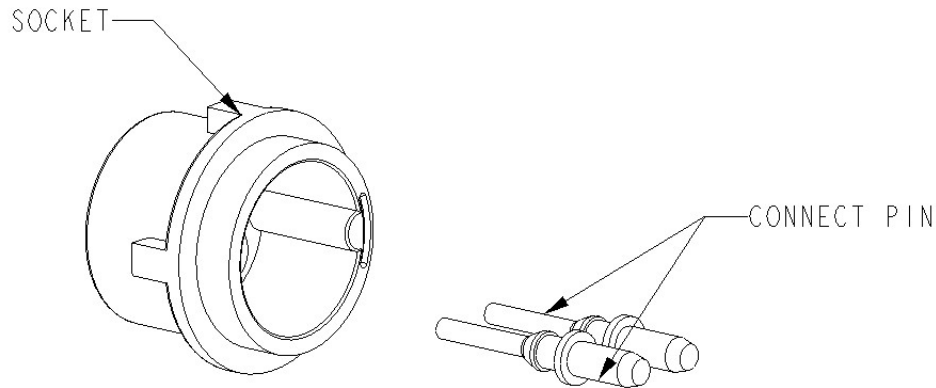


BCS320H10004



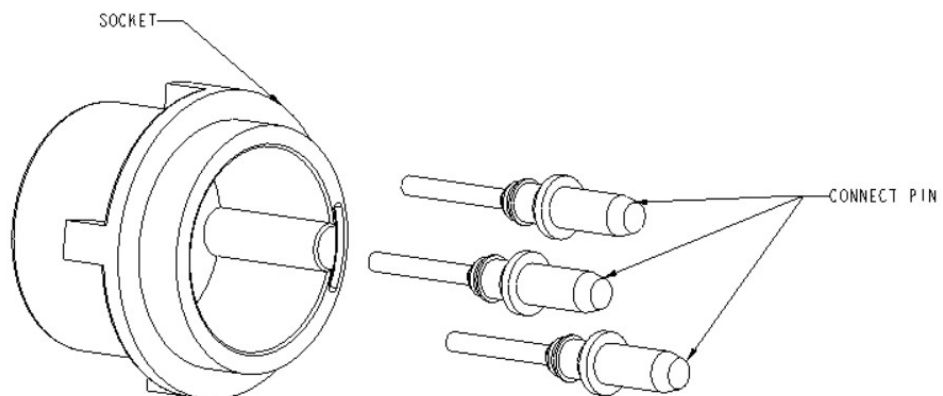
2.2 Material List

BCS320H10002



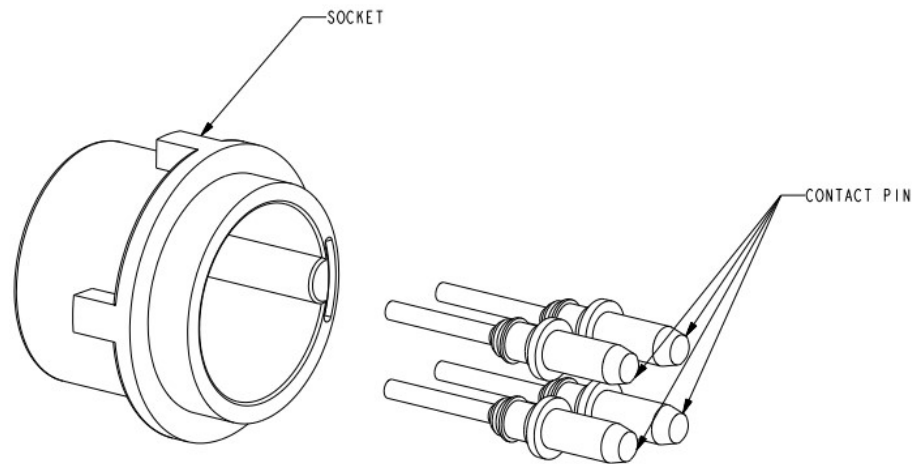
Item No.	Description	Quantity	Material
1	Connect Pin	2	CuZn35Pb2
2	Socket Housing	1	PA66, Beige

BCS320H10003



Item No.	Description	Quantity	Material
1	Connect Pin	3	CuZn35Pb2
2	Socket Housing	1	PA66, Beige

BCS320H10004



Item No.	Description	Quantity	Material
1	Connect Pin	4	CuZn35Pb2
2	Socket Housing	1	PA66, Beige

3. Specification

MECHANIAL DATA	
INSERTION FORCE (SOCKET/PLUG):	
SOCKET (TERMINALS)	>3.0 N (0.7 lb.)
EXTRACTION FORCE (SOCKET/PLUG):	
SOCKET (TERMINALS)	<8.0 N (1.8 lb.)
ELECTRICAL DATA	
CONTACT RESISTANCE	<150 mΩ
CONTACT RESISTANCE STABILITY (PULLING WITH 100g IN ALL DIRECTIONS)	<150 mΩ
INSULATION RESISTANCE	>1 mΩ
CURRENT (CONTINUOUS)	= 500 mA MAX.

4. Change History

Revision	Specification Changes	Date	Responsible
A	Frist Release	2017-04-10	Lamb Yang